

WiScope® 2nd Generation Single-Use Ureteroscope

- Same Resolution of
400*400 pixels
- Compatible with the
Same Image System



WiScope® Image System

© 7.5 FR URETEROSCOPE SPECIFICATIONS

Model	100SL
Deflection	Reverse Deflection
Field of View	120°
Direction of View	Forward
Depth of Field	2–50mm
Insertion Tube Outer Diameter	7.5Fr
Working Channel Diameter	3.6Fr
Angulation Range	275°Up / 275°Down
Working Length of Shaft	670mm
Total Length	905mm

CONTACT

OTU Medical Inc.
2847A Whipple Rd., Union City, CA 94587, USA
www.otumed.com
sales@otumed.com
+1 (408) 461-9801

OTU[®] Medical

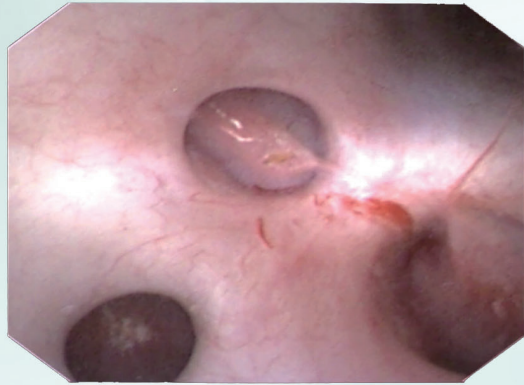
7.5 Fr

WiScope® Single-Use Digital Flexible Ureteroscope

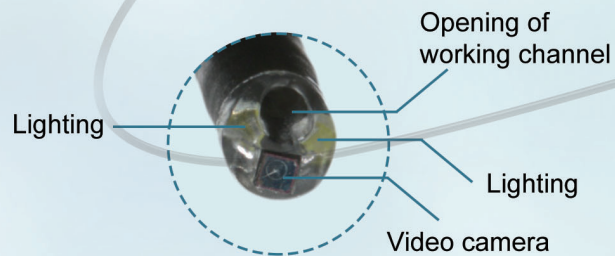


- No cross-infection
- No sterilization
- No maintenance

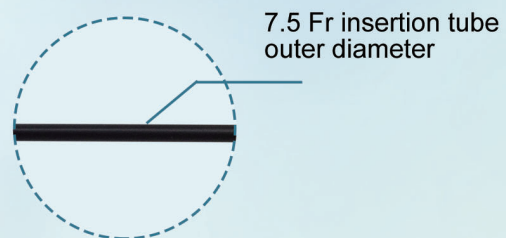
Bring smart views to One Time Use (OTU) surgical devices



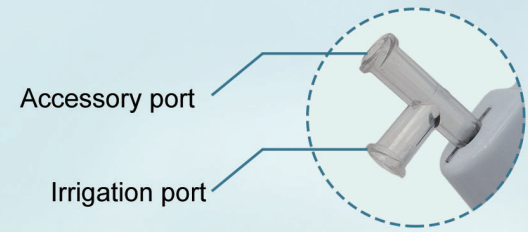
- Excellent maneuverability
- Maximal deflection of 275° in two directions
- With passive bending feature
- Self-locking deflection angle



- Image resolution of 400×400 pixels
- Multilevel illumination adjustment



- The ultra-thin insertion tube facilitates operations and minimizes patient injury risks
- 1:1 implementation of hand movements through to the distal end



- Allows passage of accessory instruments and rapid fluid injection respectively during procedures