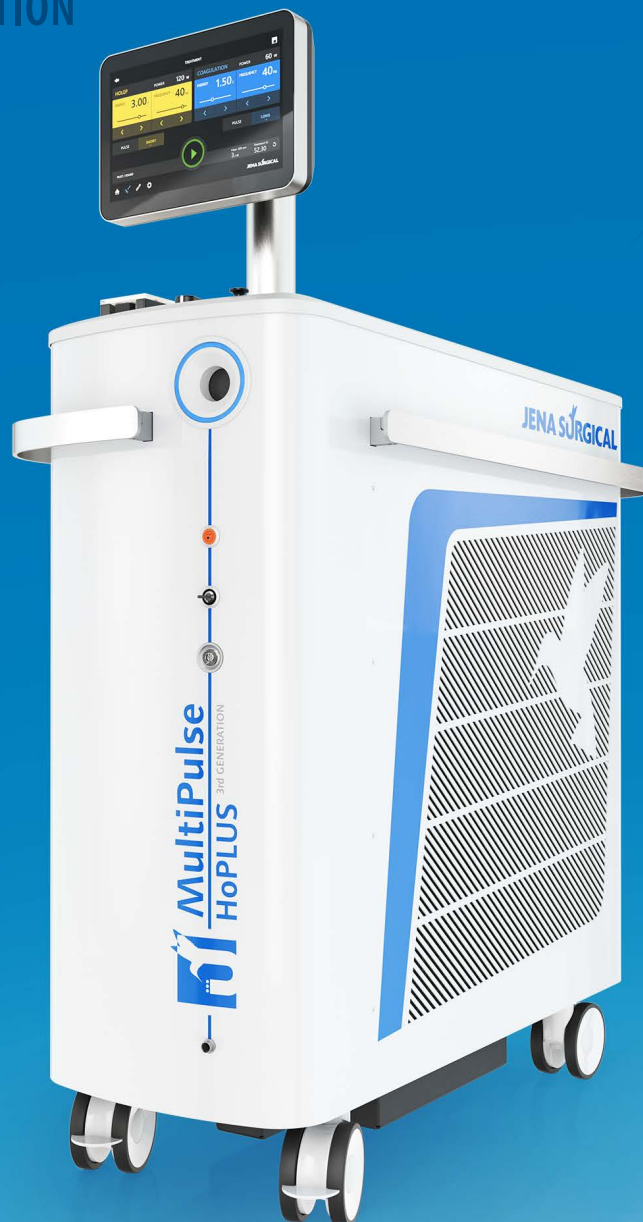


MULTIPULSE HOPLUS^{3rd GENERATION}

THE FUSION OF LASER
AND MORCELLATION
TECHNOLOGY



JENA SURGICAL
LASER AT YOUR SIDE

THE ALL-IN-ONE SOLUTION

MULTIPULSE HOPLUS 3rd GENERATION

The **MultiPulse HoPLUS 3rd Generation** is a high-power holmium laser designed for both the surgical treatment of benign prostatic hyperplasia (BPH) and endoscopic lithotripsy. Its versatility allows for a swift transition from enucleation to morcellation, facilitated by various configuration options including the optional integrated morcellator as well as a laser source reaching 150 W.

Thanks to high-energy pulses, tissue dissection becomes effortless while long pulses lead to a remarkable coagulation and high-frequency pulsed laser ensure outstanding surgical outcomes. These features collectively position the **MultiPulse HoPLUS** as an invaluable asset in the operating room.

ADVANTAGES FOR THE SURGEON

- High power HOLMIUM laser
- High peak power & pulse repetition rate
- Fast vaporization and cutting with excellent hemostasis
- Effortless transitions from enucleation to morcellation to immediately remove the enucleated tissue, facilitated by the optional integrated morcellator accessory
- Streamlined operation with the elimination of excess footswitches
- Dual pedals enable mode selection without the need to change the laser settings or divert attention from the surgical field, e.g. cutting and coagulation



MULTIPULSE HOPLUS^{3rd GENERATION}

INTEGRATED MORCELLATOR
(optional) for seamless
transition

12" DISPLAY
for better visibility

WASTE CONTAINER
with bigger volume

**FIBER
TEMPERATURE
SENSOR**

FRONT CONNECTOR
of the footswitch

LOW-NOISE HOLMIUM LASER
for a quiet work environment



VISIBILITY & INTUITIVENESS

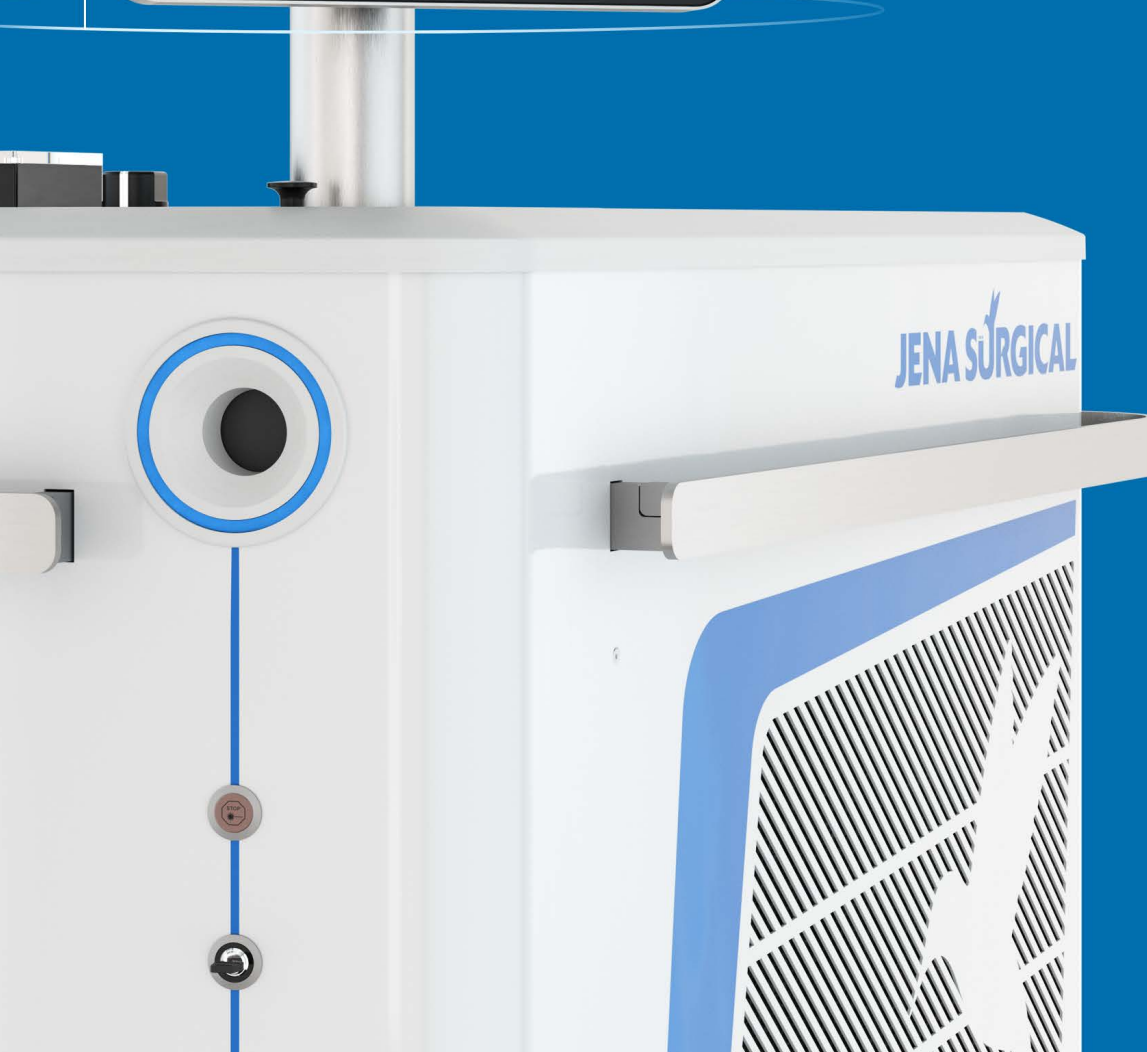


WORKSCREEN

Increased screen size | 12.0" LCD Display 16:10

New display mounting | repositioned arrangements

Ergonomy | 180° screen rotation





DESIGN UPDATE
Dark mode

WORKSCREEN & GUI

Enhanced GUI | for better user-friendliness

Foot Switch Indicator | for easy allocation

FIBERS

Bare Fibers | reusable and single use

Fiber Diameters | 200, 272, 365, 400, 550,
600, 800, 1,000 μm

EXPANDED

application parameter
field for small fibers

05

THE ADVANCED MULTICUT

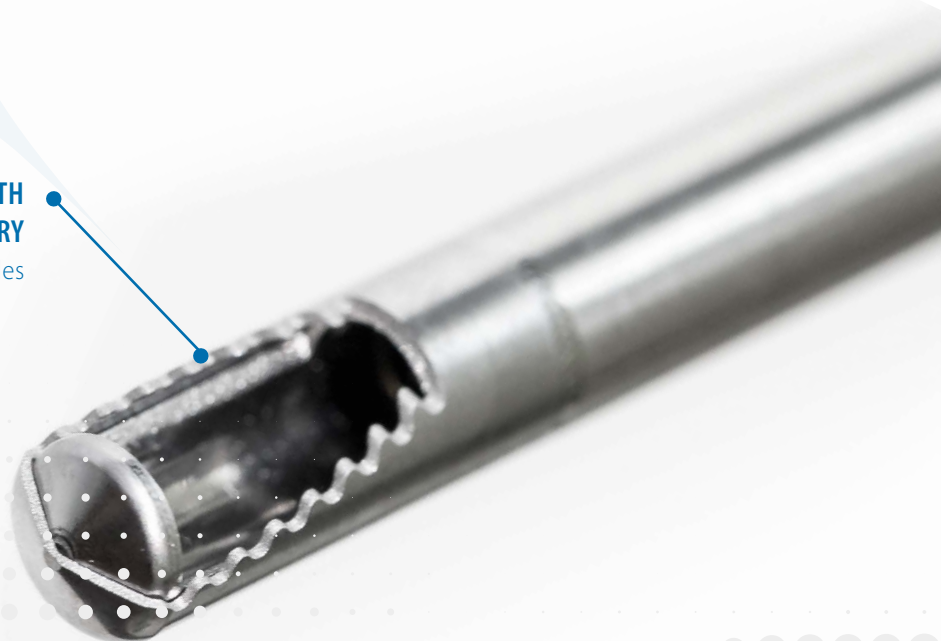
MULTICUT

The MultiPulse HoPLUS laser system contains an **integrated morcellation module**, which allows the morcellation of enucleated adenoma within the bladder to be performed very quickly. Thanks to the peristaltic pump, the aspiration is highly efficient and additionally ensures a maximum of safety and protection against unintended bladder wall injuries.

ADVANTAGES

- Ergonomic design, independent right or left handed use
- No vacuum vessel, no interruption
- New and facilitated coupling – *Plug and Cut*
- Unique combination of laser and morcellation system in one device (optional)
- Optimized cutting teeth geometry guarantees always the possibility & enough tissue for a histopathological examination
- Two different blade sizes

**CUTTING TEETH
GEOMETRY**
with rotating blades



INTEGRATED MORCELLATION MODULE

Accessories | Tube set, morcellation handpiece with blades

Dimensions | 15 Fr x 350 or 400 mm (diameter x free length)

Aspiration pump flow rate | Adjustable

Oscillation frequency | 0 or 2 – 5 Hz

Rotation speed | 500 – 3,000 rpm

LIGHT & EASY
ergonomic design

FACILITATED
Coupling system

TISSUE WASTE CONTAINER

Two tissue waste container sizes available: 200 ml and 300 ml, single use

DESIGN & USABILITY



MULTIPULSE HOPLUS 3rd Generation

The **MultiPulse HoPLUS** comes along with a new design, new arrangement of interfaces and various enhancements.



FIBER CONNECTION

reusable and single use fibers

MORCELLATION

MultiCut handpiece connection

FRONT CONNECTION

of dual pedal footswitch

APPLICATIONS AND CLINICAL CASES

The **MultiPulse HoPLUS 3rd Generation** stands out as one of the most versatile laser systems in urology. With the adept guidance of a surgeon, the utilization of high-energy pulses simplifies tissue dissection, ensuring consistently optimal surgical outcomes. Boasting high-frequency pulses, the laser is ideal for addressing conditions such as benign prostatic hyperplasia and conducting endoscopic lithotripsy, solidifying its position as an essential instrument in endourological centers.



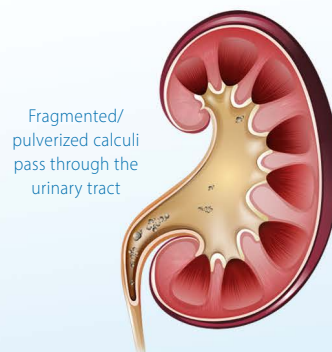
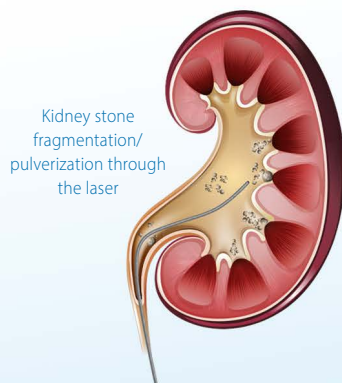
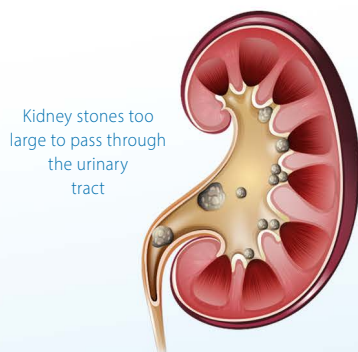
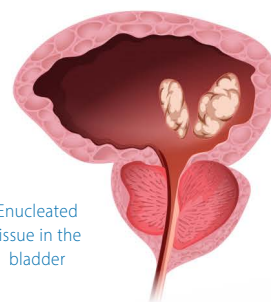
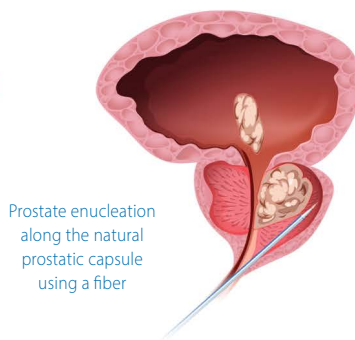
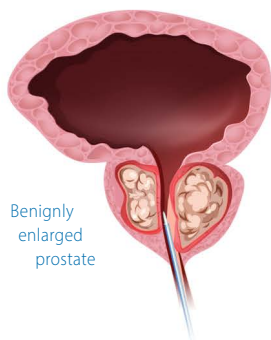
UROLOGY

HoLEP, Urethrotomy, Bladder
Neck Incision, Lithotripsy



GENERAL SURGERY

Lithotripsy, Coagulation



VERSATILITY

MULTIPULSE HOPLUS 3rd GENERATION



150 W / 100 Hz
integrated Morcellator
(optional)

POWERKIT⁵⁰

additional 50 W of power for the
high power Holmium laser
with 100 W and 100 Hz
easy and fast to upgrade



100 W / 100 Hz

upgradable to
150 W/100 Hz
integrated Morcellator
(optional)

POWERKIT²⁰

additional 20 W of power for the
high power Holmium laser
with 80 W and 75 Hz
easy and fast to upgrade



100 W / 75 Hz

no upgrade
integrated Morcellator
(optional)



80 W / 75 Hz

upgradable to
100 W/75 Hz
integrated Morcellator
(optional)

PREMIUM

UPGRADES

BASIC

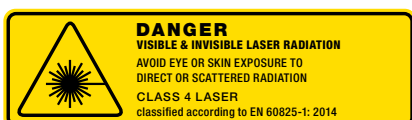
TECHNICAL SPECIFICATIONS

MultiPulse HoPLUS 3rd Generation	
Laser Source	Ho:YAG
Wavelength	2,100 nm
Emission Mode	Pulsed Wave (pw)
Power	up to 150 W (depending on the configuration and fiber in use)
Pulse Energy	0.2 - 6 J
Repetition Rate	Up to 100 Hz (depending on the configuration)
Pulse Duration	150 - 1,700 μ s
Cooling	Internal water cooling
Control Panel	12.0" LCD display 16:10
Integrated Morcellation Module (Optional)	Integrated auxiliary morcellator Ergonomic handpiece Exchangeable blades
Device Accessories	Bare fibers (reusable and single use) available in following diameters: 200, 272, 365, 400, 550, 600, 800, 1000 μ m
Dimensions and Weight	46 cm x 105 cm x 116 cm (W x D x H) - 285 kg
Electrical requirements	230 VAC 50/60 Hz 32 A

BROCHURE NOT FOR THE U.S.A.



**DEVICE CERTIFIED ACCORDING TO
MEDICAL DEVICE DIRECTIVE 93/42/EEC**



JENA SURGICAL
LASER AT YOUR SIDE

JenaSurgical is the brand of the surgical business unit of Asclepion Laser Technologies. Specifications are subject to change without notice.



MADE IN GERMANY
ALWAYS THE LATEST PRODUCT INFORMATION



FOLLOW US

Asclepion Laser Technologies GmbH
Brüsseler Str. 10
07747 Jena | Germany

www.jenasurgical.com